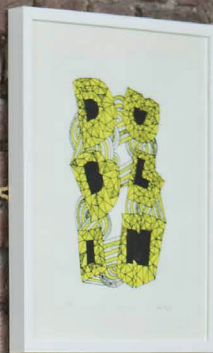


English Courses for Adults



ISI  Dublin

AGENTS

PRICE LIST

ADULT SCHOOL

ADMINISTRATIVE FEES

| | |
|--|-----|
| Application fee | 50 |
| Accommodation booking fee | 60 |
| Course book & academic materials 1 - 12 weeks | 50 |
| Course book & academic materials 13+ weeks | 90 |
| Annual Medical Insurance (Academic Year Students) | 125 |
| Learner Protection Insurance (Academic Year Students) | 40 |
| Learner Protection Insurance + Annual Medical Insurance (Academic Year Students) | 160 |
| End of course Trinity Examination (Academic Year Students only) | 190 |

TRANSFERS

| | |
|--------------------------|-----|
| Airport Transfer One way | 85 |
| Airport Transfer Return | 150 |

ACCOMMODATION FEES

| Season | Oct. – Jun. | Oct. – Jun. | 25th Jun. – 24th Sept. | 25th Jun. – 24th Sept. |
|---|-------------|-------------|------------------------|------------------------|
| Type | Shared | Single | Shared | Single |
| Home Stay half board | 210 | 230 | 230 | 260 |
| Home Stay full board | 230 | 250 | 250 | 280 |
| Residence in self-catering, serviced apartments | n/a | 330 | n/a | 365 |

INDIVIDUAL AND SMALL GROUP LESSONS AND ONLINE LESSONS

| 1 hour | 1 person | 2 persons | 3 persons | 4 persons | 5+ persons |
|--------------|----------|-----------|-----------|-----------|------------|
| Face-to-face | 65 | 55 | 45 | 35 | 25 |
| Online | 48 | 41 | 34 | 26 | 19 |

NON-EU ACADEMIC YEAR ENGLISH PROGRAMMES (25 weeks study + 8 weeks holiday)

| | Morning | | Afternoon | |
|-------------|------------------|------------------------------|------------------|------------------|
| | Academic Year 15 | Academic Year 20 | Academic Year 15 | Academic Year 20 |
| Times/Weeks | 9.00 – 12.15 | 8.00 – 12.15 9.00 – 13.25 | 13.30 – 16.40 | 12.25 – 16.40 |
| 25 | 3265 | 4353 | 2612 | 3483 |
| +1 | 130 | 174 | 104 | 139 |

ENGLISH LANGUAGE COURSES

15-HOUR COURSES

- General English 15 mornings
- General English 15 afternoons

| Schedule | 9.00-12.15 | 13.30-16.40 | 9.00 – 16.40 |
|----------------|------------|-------------|--------------|
| Hours per week | 15 hours | 15 hours | 2 X 15 hours |
| 1-12 weeks | 195 | 156 | 351 |
| 13-18 weeks | 185 | 148 | n/a |
| 19-24 weeks | 175 | 140 | n/a |

20-HOUR COURSES

- General English 20 (includes 5 electives*)
- General English + FCE
- General English + CAE
- General English + Business
- IELTS intensive
- FCE Intensive
- CAE Intensive

| Schedule | 8.00-12.15 9.00-13.25 | 12.25-16.40 |
|----------------|--------------------------|-------------|
| Hours per week | 20 hours | 20 hours |
| 1-12 weeks | 280 | 224 |
| 13-18 weeks | 265 | 212 |
| 19-24 weeks | 250 | 200 |

25-HOUR COURSES

- General English 25 (includes 10 electives*)
- Teacher training programmes
 - Intensive General English (any Monday)
 - CLIL Methodology**
 - Technology for English Language Teaching**
 - Continuous Professional Development (CPD) for English Language Teaching**
 - Irish Culture, History and Literature**



| Schedule | 8.00-13.25 |
|----------------|------------|
| Hours per week | 25 hours |
| 1-12 weeks | 360 |
| 13-18 weeks | 340 |
| 19-24 weeks | 330 |

*Electives include Grammar & Writing, Conversation Fluency, Pronunciation and Exam skills (subject to availability)

**Need minimum of 4 students to start

LOVE DUBLIN LOVE ISI



Winner-Star English Language School Europe 2014, 2016, 2018 and 2020/21.

ISI  Dublin

4 Meetinghouse Lane,
Mary's Abbey,
Dublin, Ireland
D07 V271

+353 1 872 7888

info@isi-ireland.ie

www.isi-ireland.ie



Directors, Brian Burns & James Dorrian